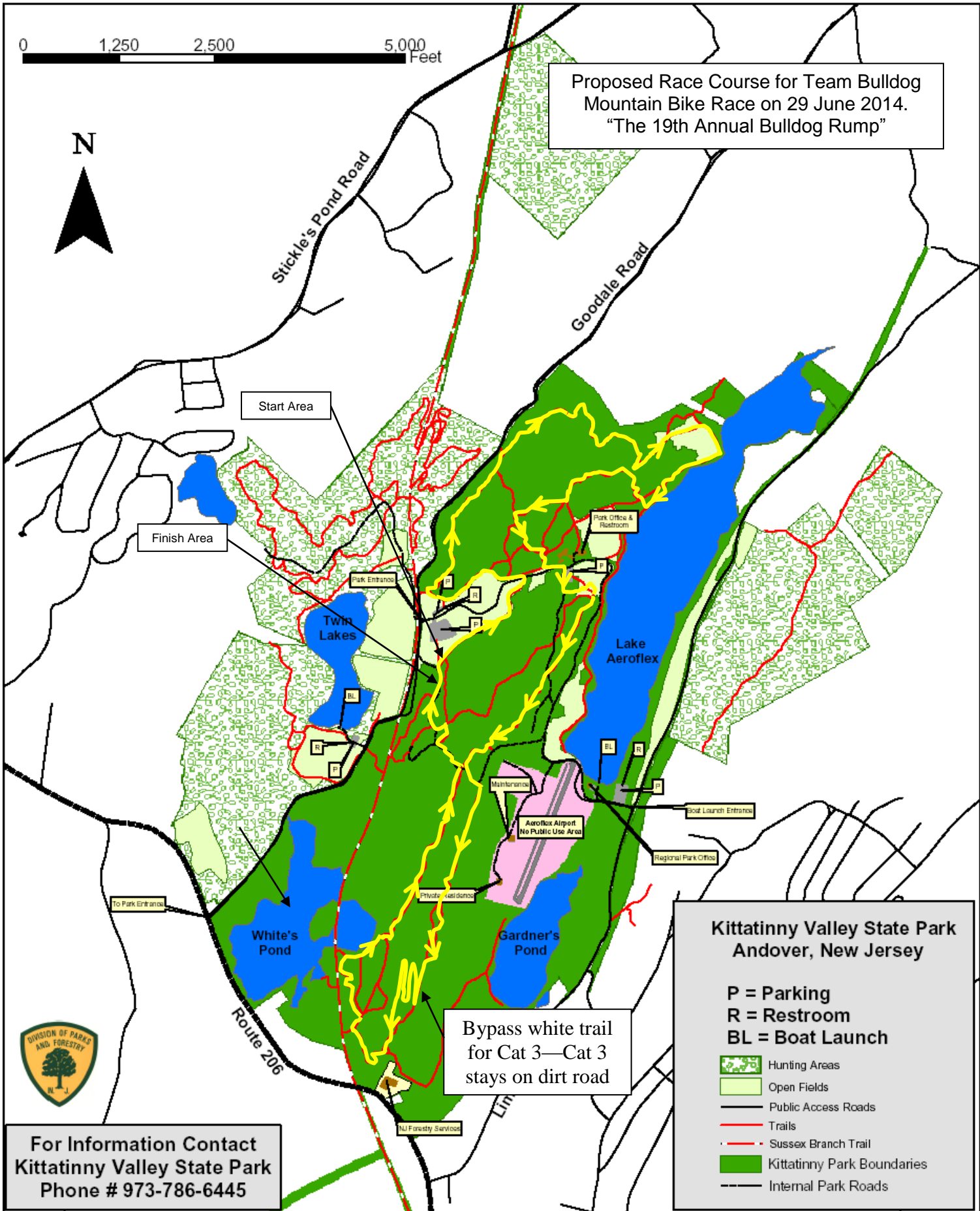


Kittatinny Valley State Park

0 1,250 2,500 5,000 Feet



Proposed Race Course for Team Bulldog Mountain Bike Race on 29 June 2014. "The 19th Annual Bulldog Rump"



Stickles Pond Road

Goodale Road

Start Area

Finish Area

Twin Lakes

Lake Aeroflex

White's Pond

Gardner's Pond

Route 206

Bypass white trail for Cat 3—Cat 3 stays on dirt road

Park Office & Restroom

Park Entrance

Maintenance

Aeroflex Airport No Public Use Area

Boat Launch Entrance

Regional Park Office

To Park Entrance

Private Landlord

NJ Forestry Services

Kittatinny Valley State Park
Andover, New Jersey

P = Parking
R = Restroom
BL = Boat Launch

- Hunting Areas
- Open Fields
- Public Access Roads
- Trails
- Sussex Branch Trail
- Kittatinny Park Boundaries
- Internal Park Roads



For Information Contact
Kittatinny Valley State Park
Phone # 973-786-6445